

OVERVIEW OF INCOMING SIGNALS

The following information is based on incoming communication to the National Human Trafficking Hotline from January 1, 2016 – December 31, 2016 about human trafficking cases and issues related to human trafficking in the United States and U.S. territories. Communication can take the form of **phone calls, online tip reports, or emails**. Any communication with the hotline regarding topics unrelated to human trafficking is not included in this report. In 2016, the National Human Trafficking Hotline received a total of **30,918** substantive phone calls, emails, or online tip reports nationwide.



SUBSTANTIVE CALL DATA

The following statistics are based solely on substantive calls about human trafficking and issues related to human trafficking made to the National Human Trafficking Hotline between January 1, 2016 and December 31, 2016. Substantive calls do not include hang-ups, missed calls, wrong numbers, and calls in which the caller's reason for calling is unknown.

CALLER TYPE	# OF CALLS	% OF CALLS
Community Member	7,606	28.0%
Victim of Trafficking	4,635	17.0%
NGO Representative	2,733	10.0%
Family of Trafficking Victim	2,182	8.0%
Victim of Other Crime	1,492	5.5%
Other	1,418	5.2%
Victim of Labor Exploitation	1,184	4.4%
Friend of Trafficking Victim	807	3.0%
Government Official	805	3.0%
Law Enforcement	753	2.8%
Medical Professional	662	2.4%
Student	509	1.9%
Legal Professional	350	1.3%
Mental Health Professional	263	1.0%
Educator/School Personnel	247	0.9%
Faith-Based Representative	233	0.9%
Trucker	196	0.7%
Business	174	0.6%
Press/Media	105	0.4%
Acquaintance of Trafficker	103	0.4%

## NATIONAL HUMAN TRAFFICKING HOTLINE DATA REPORT

### United States Report: 1/1/2016 – 12/31/2016

Buyer of Commercial Sex	102	0.4%
Contact from NHTRC Database	80	0.3%
Visa Holder	37	0.1%
Airline/Airport Personnel	34	0.1%
Military Personnel	20	0.1%
Potential Trafficker	16	0.1%
Foreign Government Official	12	0.04%
Truck Stop Employee	7	0.03%
211/311 Operator	4	0.01%
Caller Types Referenced Fewer than Three Times <sup>1</sup>	2	0.01%
Not Specified	430	1.6%
<b>TOTAL # OF SUBSTANTIVE CALLS</b>	<b>27,201</b>	<b>100.0%</b>

<sup>1</sup>To protect the identity of the people we serve, the National Human Trafficking Hotline does not disclose exact statistics related to venues, industries, victim information or caller information referenced fewer than three times.

HOW CALLER FOUND THE NATIONAL HOTLINE	# OF CALLS	% OF CALLS
Referral	1,155	4.2%
Awareness Campaign <sup>2</sup>	917	3.4%
Internet	814	3.0%
DOS Know Your Rights Pamphlet	557	2.0%
Print Media	181	0.7%
Training/Conference	163	0.6%
US Government Campaign	93	0.3%
Television	78	0.3%
Billboard	24	0.1%
Verite	22	0.1%
Radio	19	0.1%
Film	6	0.02%
Other National Hotline	6	0.02%
Unknown <sup>3</sup>	23,166	85.2%
<b>TOTAL # OF SUBSTANTIVE CALLS</b>	<b>27,201</b>	<b>100.0%</b>

<sup>2</sup>Due to changes in data structure, some specific campaigns previously tracked by the National Human Trafficking Hotline are now included in Awareness Campaigns.

<sup>3</sup>The National Human Trafficking Hotline prioritizes callers' safety and most pressing needs over gathering information regarding how they learned about the hotline. As a result, this information was only collected when provided by the caller and more urgent needs did not need to be prioritized.

**NATIONAL HUMAN TRAFFICKING HOTLINE DATA REPORT**  
*United States Report: 1/1/2016 – 12/31/2016*

<b>CALLS BY CALLER'S LOCATION (STATE)</b>	<b># OF CALLS</b>	<b>% OF CALLS</b>
California	4,188	15.40%
Texas	2,208	8.12%
Florida	1,654	6.08%
Ohio	1,368	5.03%
New York	1,000	3.68%
Michigan	838	3.08%
Georgia	691	2.54%
North Carolina	653	2.40%
Illinois	623	2.29%
Virginia	621	2.28%
Colorado	593	2.18%
Pennsylvania	583	2.14%
New Jersey	570	2.10%
Washington	559	2.06%
Maryland	545	2.00%
Arizona	478	1.76%
Missouri	425	1.56%
District of Columbia	348	1.28%
Tennessee	337	1.24%
Louisiana	327	1.20%
Wisconsin	323	1.19%
Minnesota	310	1.14%
Kentucky	309	1.14%
Oregon	308	1.13%
Massachusetts	282	1.04%
Indiana	275	1.01%
South Carolina	266	0.98%
Oklahoma	264	0.97%
Nevada	246	0.90%
Iowa	203	0.75%
Connecticut	198	0.73%
Kansas	193	0.71%
Alabama	190	0.70%
Utah	154	0.57%
Nebraska	153	0.56%
Arkansas	141	0.52%
New Mexico	125	0.46%
Mississippi	113	0.42%
Alaska	91	0.33%

## NATIONAL HUMAN TRAFFICKING HOTLINE DATA REPORT

### United States Report: 1/1/2016 – 12/31/2016

South Dakota	67	0.25%
Idaho	67	0.25%
North Dakota	65	0.24%
Hawaii	62	0.23%
Delaware	61	0.22%
New Hampshire	59	0.22%
Montana	53	0.19%
Maine	51	0.19%
West Virginia	46	0.17%
Wyoming	44	0.16%
Rhode Island	34	0.12%
Vermont	30	0.11%
Puerto Rico	35	0.13%
Virgin Islands	12	0.04%
Northern Mariana Islands	3	0.01%
Unknown	3,759	13.82%
<b>TOTAL # OF SUBSTANTIVE CALLS</b>	<b>27,201</b>	<b>100.0%</b>

#### HUMAN TRAFFICKING CASE DATA

Each request submitted to the hotline is evaluated for evidence of potential human trafficking. **In the United States in 2016, a total of 7,623 unique cases of potential human trafficking were reported to the hotline.** A case corresponds to a situation of human trafficking and can include one or multiple potential victims of trafficking. Some of the statistics below are non-cumulative because cases can include multiple potential victims with varying demographics. Additionally, in some cases, demographic information may not have been reported to the National Hotline.

PRIMARY REASON FOR CONTACTING THE NATIONAL HOTLINE	# OF CASES	% OF CASES
Report a Trafficking Tip	4,938	64.8%
Access Service Referrals	1,942	25.5%
Request Crisis Assistance	636	8.3%
Request General Information <sup>4</sup>	82	1.1%
Request T&TA <sup>5</sup>	25	0.3%
<b>TOTAL # OF CASES</b>	<b>7,623</b>	<b>100.0%</b>

<sup>4</sup>Requests for general information are situations in which an individual who is aware of a specific situation of potential trafficking may contact the National Human Trafficking Hotline for general information about human trafficking or to learn more about services available to trafficking victims.

<sup>5</sup>Requests for T&TA (Training and Technical Assistance) are situations in which service providers or law enforcement working with a victim of trafficking contact the National Hotline for technical assistance.

NATIONAL HUMAN TRAFFICKING HOTLINE DATA REPORT  
*United States Report: 1/1/2016 – 12/31/2016*

VENUE/INDUSTRY OF POTENTIAL TRAFFICKING	# OF CASES	% OF CASES
<b>Sex</b>	<b>5,591</b>	<b>73.3%</b>
Hotel/Motel-Based	588	7.7%
Commercial Front Brothel	559	7.3%
Internet-Based <sup>6</sup>	411	5.4%
Residential Brothel	367	4.8%
Street-Based	234	3.1%
Escort/Delivery Service	230	3.0%
Pornography	197	2.6%
Personal Sexual Servitude	126	1.7%
Truck Stop-Based	93	1.2%
Other Venue	91	1.2%
Hostess/Strip Club	65	0.9%
Bar/Club-Based	62	0.8%
Internet Chat	29	0.4%
Sex Tourism	10	0.1%
Legalized Brothel	3	0.04%
Venues Referenced in Fewer than Three Cases <sup>7</sup>	1	0.01%
Venue Not Specified	2,525	33.1%
<b>Labor</b>	<b>1,067</b>	<b>14.0%</b>
Domestic Work	197	2.6%
Agriculture/Farms	125	1.6%
Traveling Sales Crew	100	1.3%
Restaurant/Food Service	74	1.0%
Health & Beauty Services	45	0.6%
Construction	39	0.5%
Illicit Activity	38	0.5%
Landscaping Service	34	0.4%
Peddling Ring	32	0.4%
Begging Ring	30	0.4%
Hospitality	28	0.4%
Retail/Other Small Business	26	0.3%
Janitorial Cleaning Service	20	0.3%
Factory	18	0.2%
Other Industry	18	0.2%
Health Care	14	0.2%
Forestry/Reforestation	13	0.2%
Professional, Scientific, or Technology Services	11	0.1%
Arts & Entertainment	9	0.1%
Transportation	9	0.1%
Hostess/Strip Club	7	0.1%
Bar/Club	6	0.1%

## NATIONAL HUMAN TRAFFICKING HOTLINE DATA REPORT

### United States Report: 1/1/2016 – 12/31/2016

Aquafarming/Fishing	5	0.1%
Education	4	0.1%
Recreational Facility	3	0.4%
Industries Referenced in Fewer than Three Cases <sup>7</sup>	6	0.1%
Industry Not Specified	156	2.0%
<b>Sex and Labor</b>	<b>272</b>	<b>3.6%</b>
<b>Trafficking Type Not Specified<sup>8</sup></b>	<b>693</b>	<b>9.1%</b>
<b>TOTAL # OF POTENTIAL TRAFFICKING CASES</b>	<b>7,623</b>	<b>100.0%</b>

<sup>6</sup>Internet-based cases typically involve reports of sex trafficking in which an individual is advertised for commercial sex online but the venue of the sex act is unknown or not specified.

<sup>7</sup>To protect the identity of the people we serve, the National Human Trafficking Hotline does not disclose exact statistics related to venues, industries, victim information or caller information referenced fewer than three times.

<sup>8</sup>Cases where trafficking type is not specified typically occur when a law enforcement agent or service provider contacts the National Hotline for resources and referrals but does not disclose details about the trafficking situation due to confidentiality. This category also includes cases in which the person reporting the information references human trafficking but does not provide further detail regarding the presence of labor or commercial sex. These cases are often submitted to the National Hotline through anonymous online tip reports.

VICTIM DEMOGRAPHICS <sup>9</sup> (LABOR TRAFFICKING CASES)	# OF CASES	% OF CASES
Adults	1,046	13.7%
Minors	296	3.9%
Females	821	10.8%
Males	613	8.0%
Transgender Females	8	0.1%
Transgender Males	5	0.1%
Gender Non-Conforming Individuals	Fewer than Three <sup>10</sup>	N/A
US Citizens/Legal Permanent Residents	229	3.0%
Foreign Nationals <sup>11</sup>	762	10.0%
<b>NON-CUMULATIVE<sup>9</sup></b>		

<sup>9</sup>These statistics are non-cumulative. Individual cases may involve multiple victims with various ages, gender identities, and statuses. In some cases, demographic information is not reported. This table shows the number of cases referencing at least one potential victim of each demographic. It does not represent the total number of potential victims who fit into each demographic.

<sup>10</sup>To protect the identity of the people we serve, the National Human Trafficking Hotline does not disclose exact statistics related to venues, industries, victim information or caller information referenced fewer than three times.

<sup>11</sup>A Foreign National in this data set is defined as any individual who is not currently a US Citizen or Legal Permanent Resident.

VICTIM DEMOGRAPHICS <sup>12</sup> (SEX TRAFFICKING CASES)	# OF CASES	% OF CASES
Adults	3,714	48.7%
Minors	2,074	27.2%
Females	5,305	69.6%
Males	347	4.6%
Transgender Females	51	0.7%
Transgender Males	9	0.1%

## NATIONAL HUMAN TRAFFICKING HOTLINE DATA REPORT

### United States Report: 1/1/2016 – 12/31/2016

Gender Non-Conforming Individuals	6	0.1%
US Citizens/Legal Permanent Residents	1,861	24.4%
Foreign Nationals <sup>13</sup>	666	8.7%
<b>NON-CUMULATIVE<sup>12</sup></b>		

<sup>12</sup> These statistics are non-cumulative. Individual cases may involve multiple victims with various ages, gender identities, and statuses. In some cases, demographic information is not reported. This table shows the number of cases referencing at least one potential victim of each demographic. It does not represent the total number of potential victims who fit into each demographic.

<sup>13</sup>A Foreign National in this data set is defined as any individual who is not currently a US Citizen or Legal Permanent Resident.

POTENTIAL VICTIMS(S) COUNTRY OR COUNTRIES OF ORIGIN	# OF CASES	% OF CASES
U.S.A	2,103	27.6%
Mexico	279	3.7%
China	144	1.9%
Guatemala	94	1.2%
Honduras	59	0.8%
Philippines	59	0.8%
El Salvador	52	0.7%
Thailand	34	0.4%
Russia	31	0.4%
Vietnam	29	0.4%
India	26	0.3%
South Korea	25	0.3%
Colombia	24	0.3%
Jamaica	19	0.2%
Dominican Republic	18	0.2%
Cuba	15	0.2%
Japan	14	0.2%
Nigeria	14	0.2%
Brazil	13	0.2%
Venezuela	12	0.2%
Ukraine	12	0.2%
Peru	11	0.1%
Romania	9	0.1%
Canada	9	0.1%
Other	9	0.1%
Haiti	8	0.1%
Nicaragua	7	0.1%
South Africa	7	0.1%
Hungary	6	0.1%
Kenya	6	0.1%
Ghana	5	0.1%

NATIONAL HUMAN TRAFFICKING HOTLINE DATA REPORT  
*United States Report: 1/1/2016 – 12/31/2016*

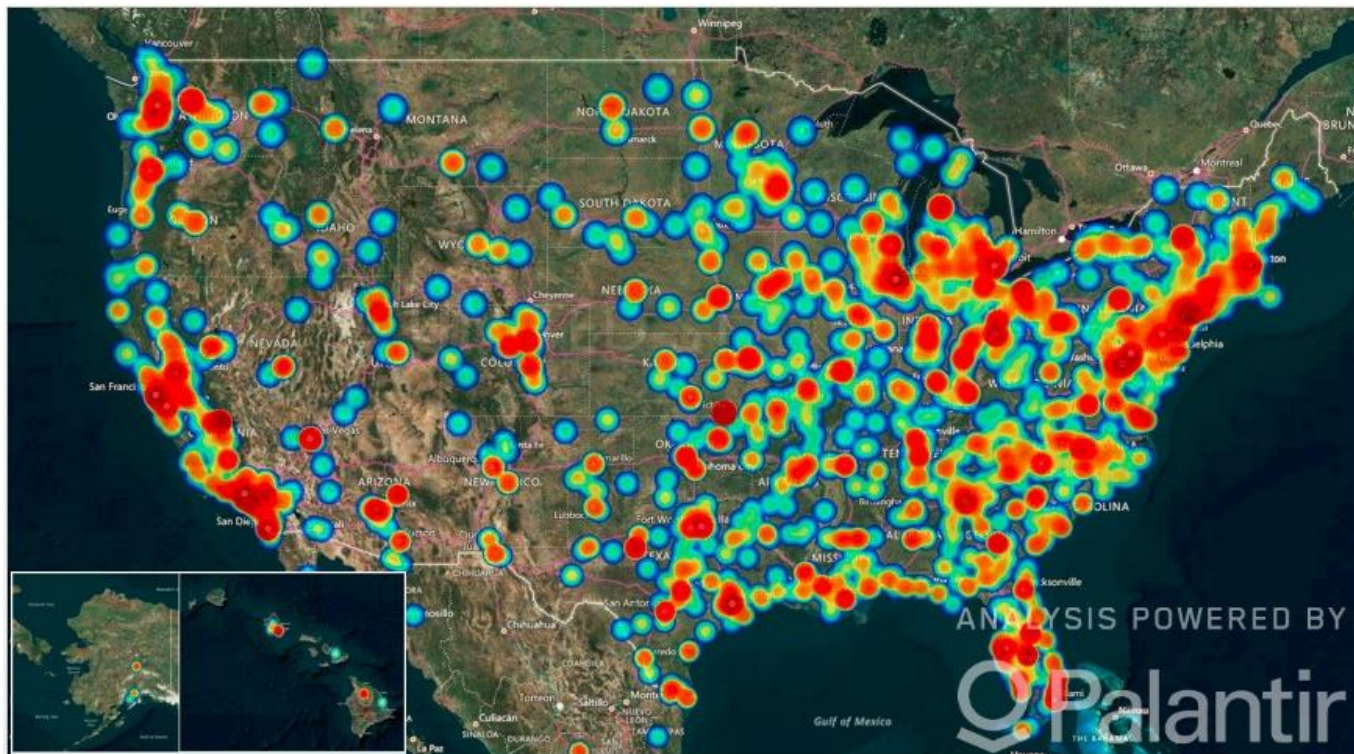
Cambodia	5	0.1%
Nepal	5	0.1%
Pakistan	4	0.1%
France	4	0.1%
Taiwan	4	0.1%
Ethiopia	4	0.1%
Cameroon	4	0.1%
Ecuador	4	0.1%
Indonesia	4	0.1%
Liberia	4	0.1%
Bangladesh	4	0.1%
Costa Rica	4	0.1%
Singapore	4	0.1%
Czech Republic	4	0.1%
Uganda	4	0.1%
United Kingdom	4	0.1%
Argentina	4	0.1%
Panama	4	0.1%
Somalia	3	0.04%
Afghanistan	3	0.04%
Malaysia	3	0.04%
Australia	3	0.04%
Egypt	3	0.04%
Sudan	3	0.04%
Sri Lanka	3	0.04%
Democratic Republic of Congo	3	0.04%
Bulgaria	3	0.04%
Countries Referenced in Fewer than Three Cases <sup>14</sup>	54	0.7%
Unknown/Not Specified	4,671	61.3%
<b>NON-CUMULATIVE<sup>15</sup></b>		

<sup>14</sup> To protect the identity of the people we serve, the National Human Trafficking Hotline does not disclose exact statistics related to venues, industries, victim information or caller information referenced fewer than three times.

<sup>15</sup> These statistics are non-cumulative. Individual cases may involve multiple victims with various nationalities. In some cases, demographic information is not reported. This table shows the number of cases referencing at least one potential victim of each demographic. It does not represent the total number of potential victims who fit into each demographic.



LOCATION OF POTENTIAL TRAFFICKING CASES (WHERE KNOWN)<sup>16</sup>



<sup>16</sup>The image above is a heat map which reflects the cases reported to the National Human Trafficking Hotline. Areas in which greater numbers of cases were reported contain more red shading. This map only reflects cases in which the location of the potential trafficking was known. Some cases may involve more than one location.

\*\*\*\*\*

**Important Notes:**

The data displayed in this report was generated based on information communicated to the National Human Trafficking Hotline via phone, email, and online tip report. Each situation of trafficking reported to the National Human Trafficking Hotline was assessed for indicators of human trafficking and was found to have at least moderate- or high-level indicators. Assessments are made based on the information reported to the hotline. The National Hotline is not able to verify the accuracy of reported information.

This is not a comprehensive report on the scale or scope of human trafficking within the state. These statistics are accurate as of May 8, 2017. They may be subject to change as new information emerges.